

bmcs course

brittle/matrix cementitious
composite structures

Rostislav Chudoba
Abedulgader Baktheer
Institute of Structural Concrete



oricrete: Yoshimura vault, RWTH Aachen
(2015)

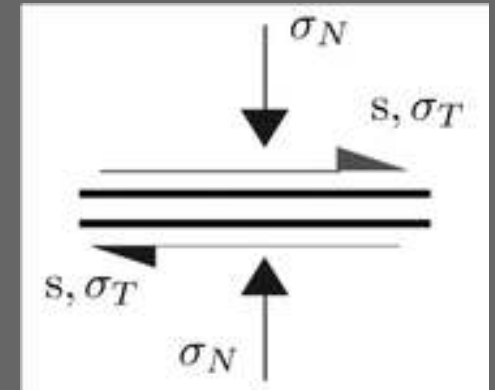
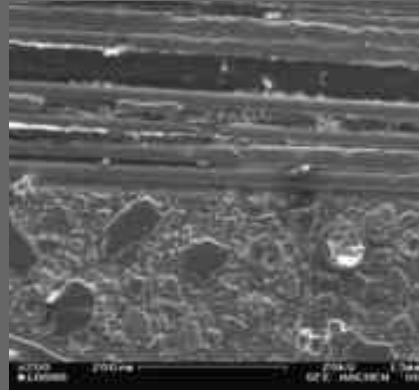
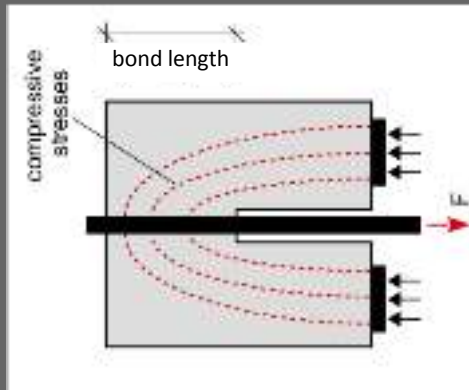


Jena, Germany, Dyckerhoff-Widmann
(1922-1923)

... what is this course about ...

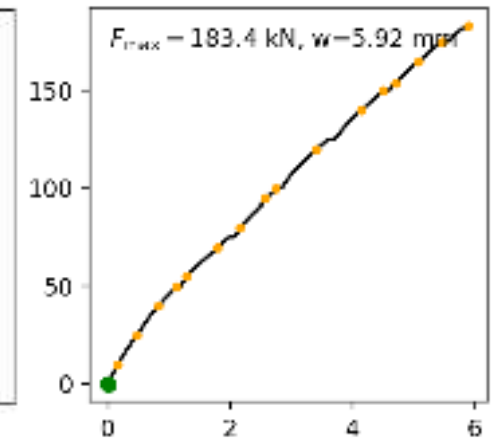
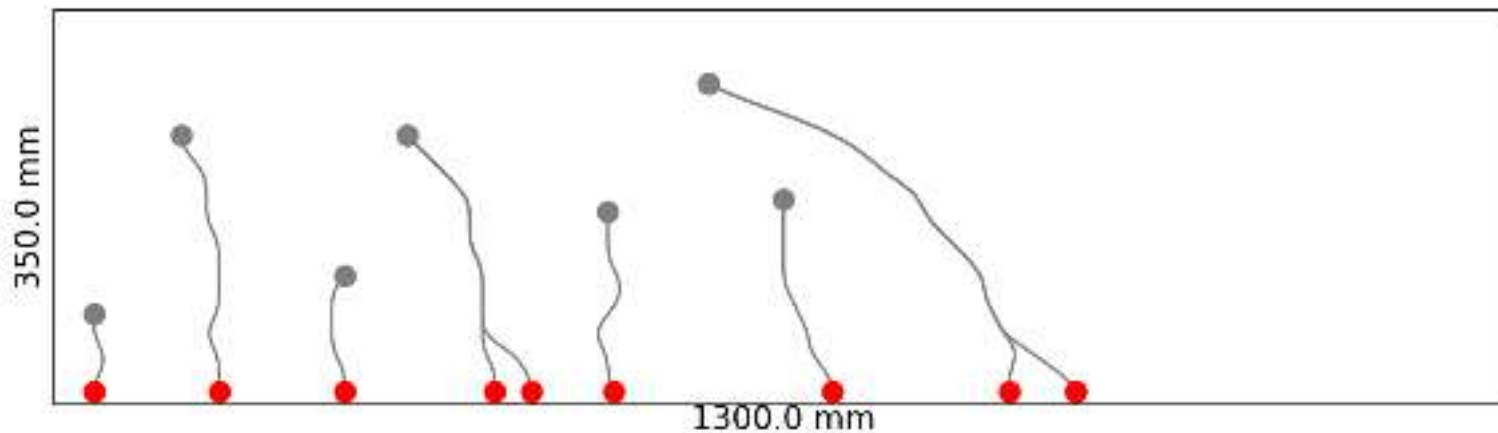
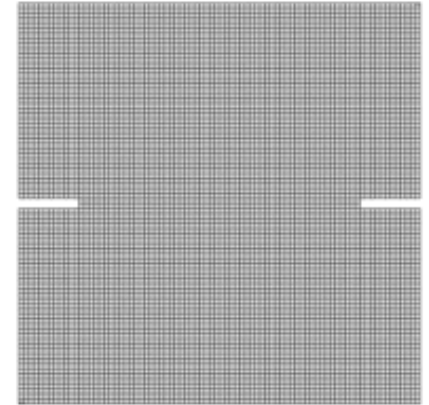
Bond - the ideal lab for learning the material modeling

- how to measure and characterize the bond behavior?
- what happens in the interface during debonding?
- how to model the debonding process?
- what happens if we change geometry or cross section?



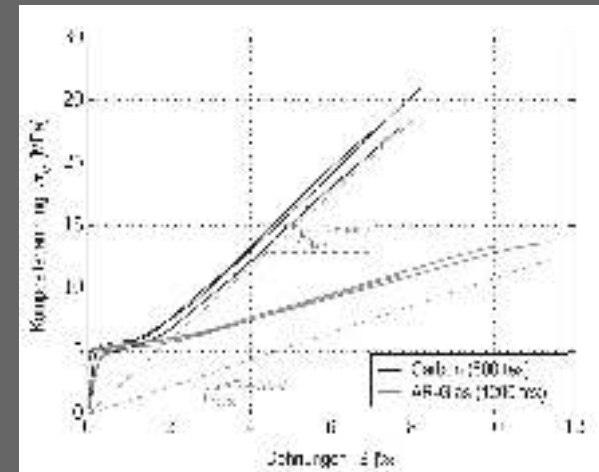
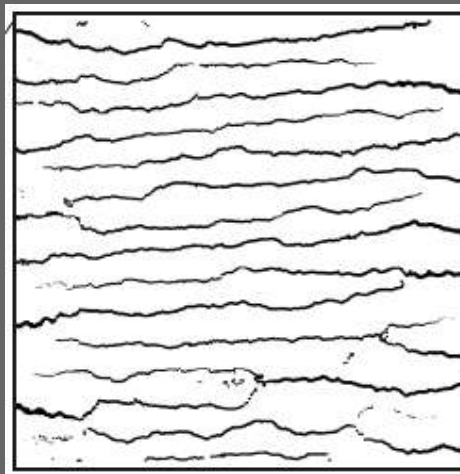
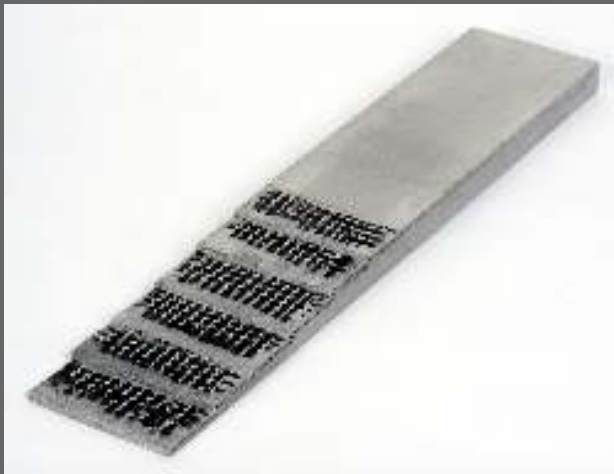
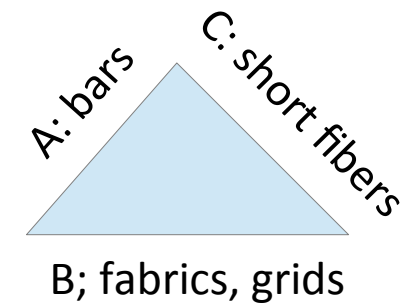
Cracking → brittle material behavior

- can cracks be useful?
- how do they emerge and propagate?
- how to model them?
- how to detect and observe them?



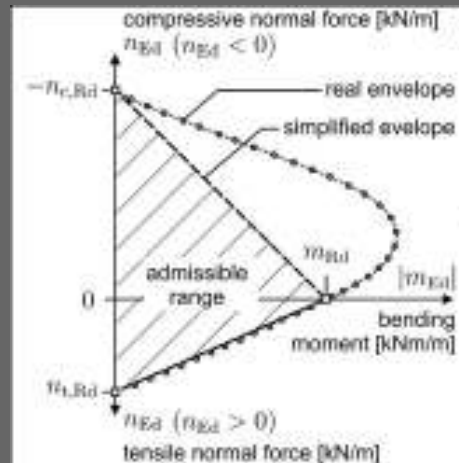
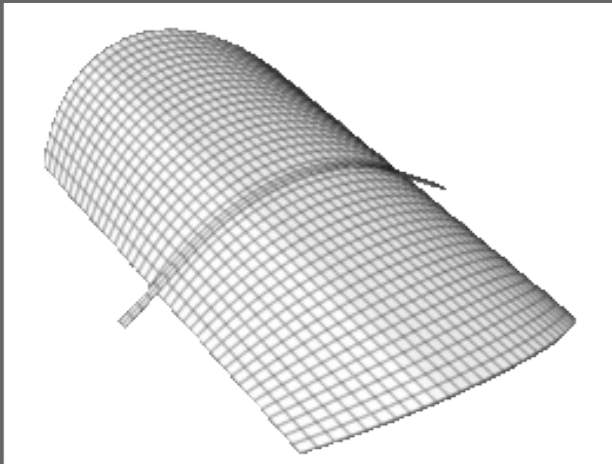
Composite – combine the advantages of two or more materials

- interplay of cracking / debonding ?
- how does it affect the material behavior?
- how to test / model / characterize it?
- how to design a high performance material?



Brittle-matrix composite structures

- structural behavior ?
- design & assessment methods ?
- applications & development potential ?



FROM ANALYSIS TO DESIGN

Change in paradigms of structural design



How to manage the complexity?

METHODS?

How to manage the complexity?

ELEMENTARY → COMPLEX

LOCAL → GLOBAL

GENERAL → SPECIAL

ABSTRACT → CONCRETE

IDEALIZATION → MODEL → CALIBRATION → VALIDATION

MECHANISMS



GENERAL

EL elastic

DB debonding / friction

DC decohesion

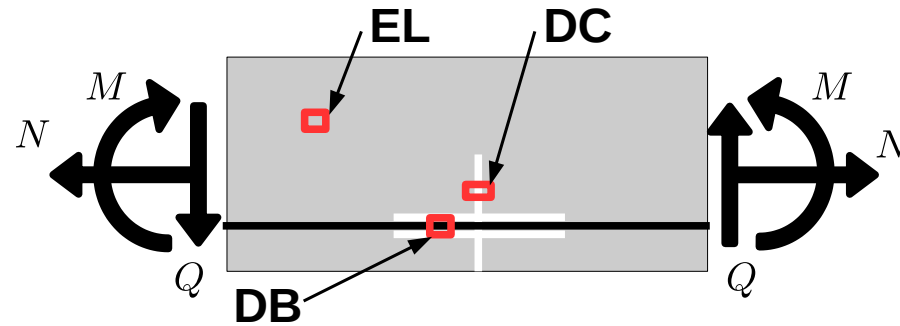
ELEMENTARY CONFIGURATIONS

M

M

STRUCTURES

MECHANISMS



GENERAL

- EL elastic
- DB debonding / friction
- DC decohesion

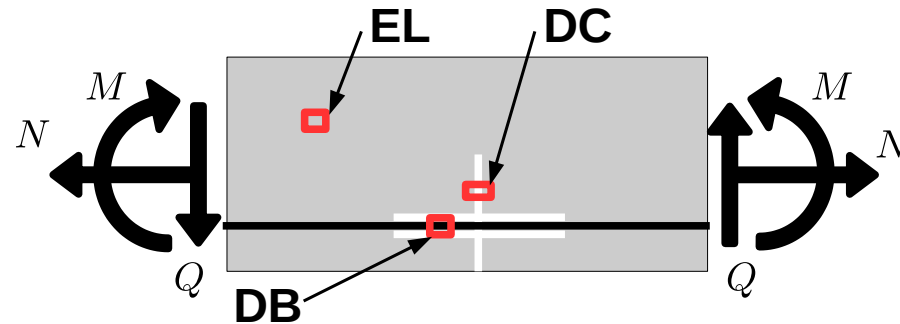
ELEMENTARY CONFIGURATIONS

M

M

STRUCTURES

MECHANISMS



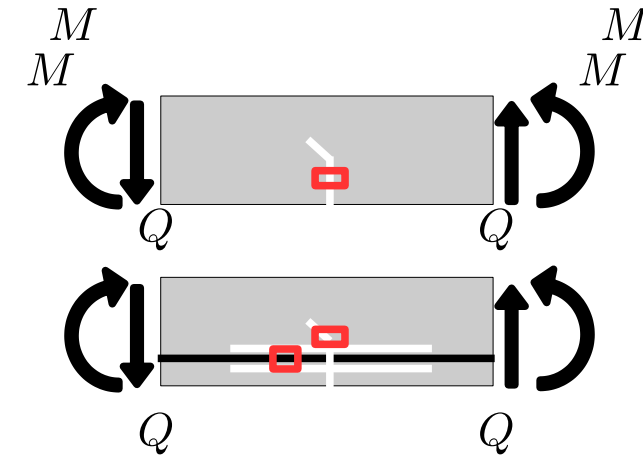
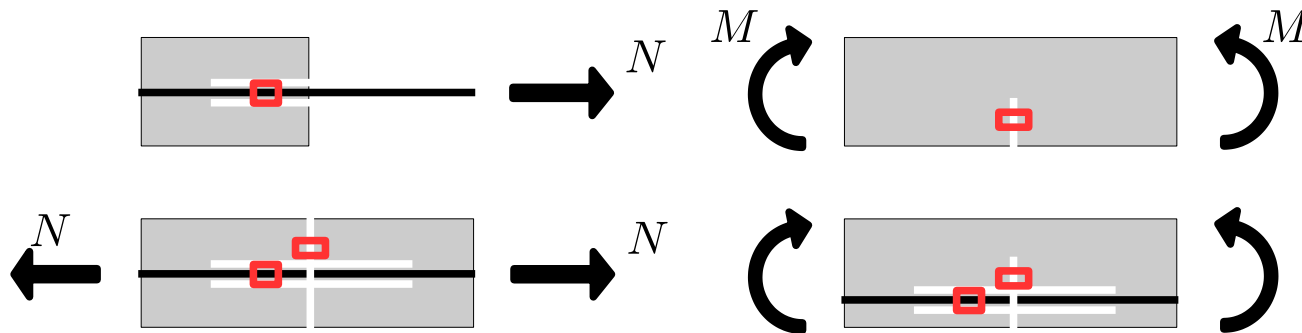
GENERAL

EL elastic

DB debonding / friction

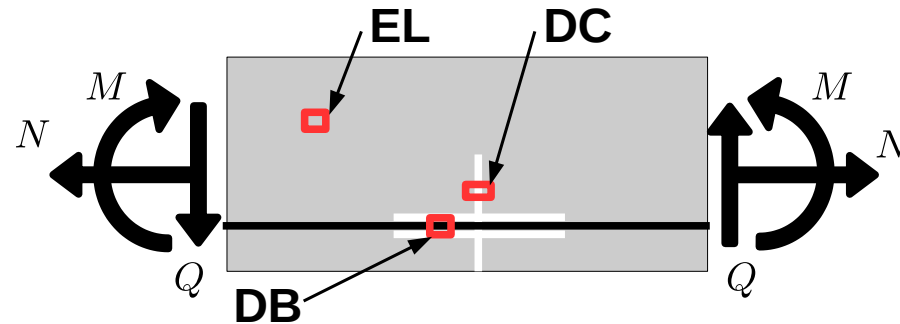
DC decohesion

ELEMENTARY CONFIGURATIONS



STRUCTURES

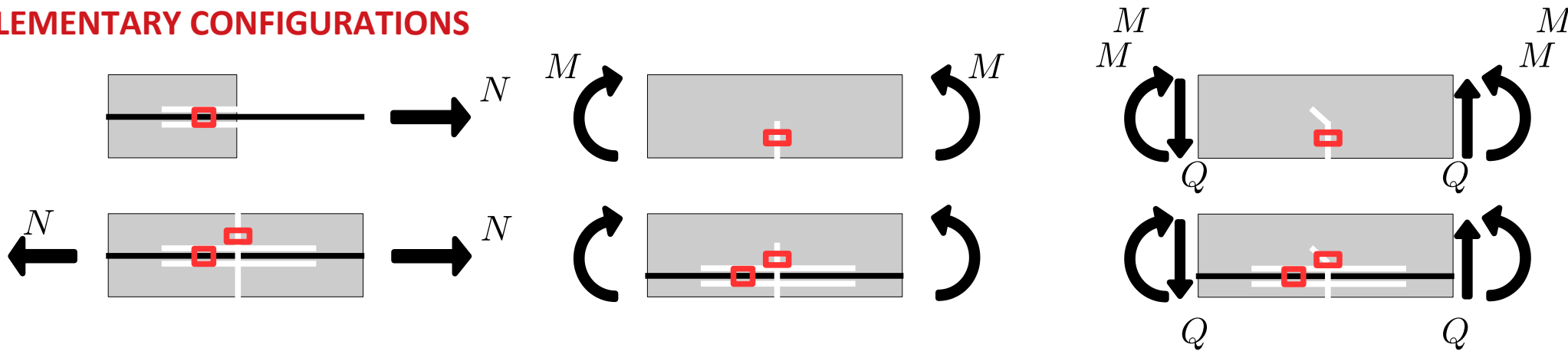
MECHANISMS



GENERAL

EL elastic
DB debonding / friction
DC decohesion

ELEMENTARY CONFIGURATIONS



STRUCTURES

